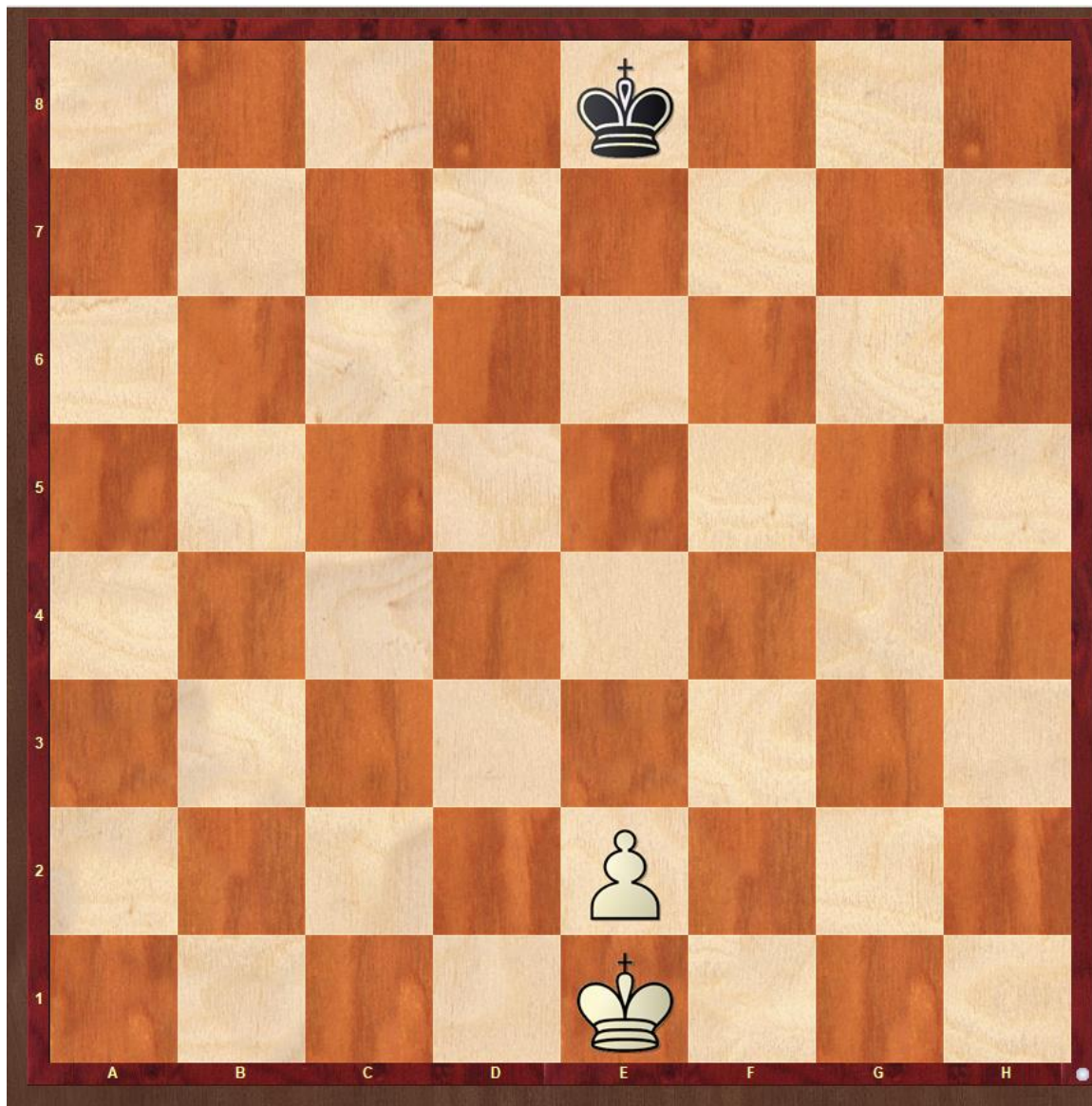


## CLASS 2 TOPICS

1. How to use a chess clock.
2. Consultation Game (timed game 15)
  - a. 2 teams
    - i. 1 Captain for each team
    - ii. 1 person to move the pieces for each team.
    - iii. 1 formal scribe for each team.
    - iv. 1 timekeeper.
    - v. Beginners sit with me for explanations as the game is played.
    - vi. All who are able-record game.
3. Review pawn promotion rule.
  - a. Promote pawn sequence when the pawn is on (e2) with King on its original square (e1). White to move – result?
  - b. Same as 3.a but with Black to move. Result?
4. Review King and Queen vs Queen Mate.
  - a. Have the student explain his thinking process.
5. Double Attack for homework.

## Pawn Promotion



Solve for white to Move – then Black to Move

## The First Basic Mating Endgame

Mating with a King and Queen against King



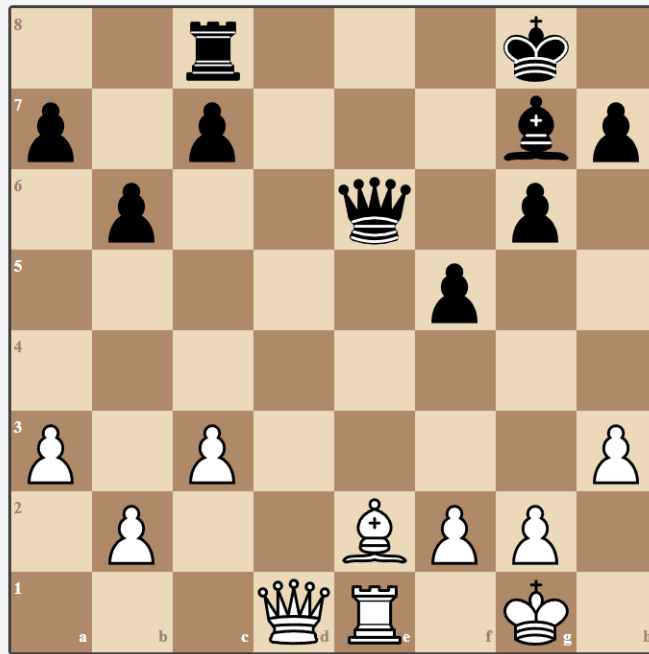
White to Move

## Double Attack

A double attack is an attack against two pieces or pawns at the same time. This type of attack is much harder to defend against and harder to visualize than an attack on a single piece or pawn. Knowing that a threat on a single piece or pawn is easily dealt with, a better alternative is a simultaneous attack against two pieces or pawns, only one of which can be defended.

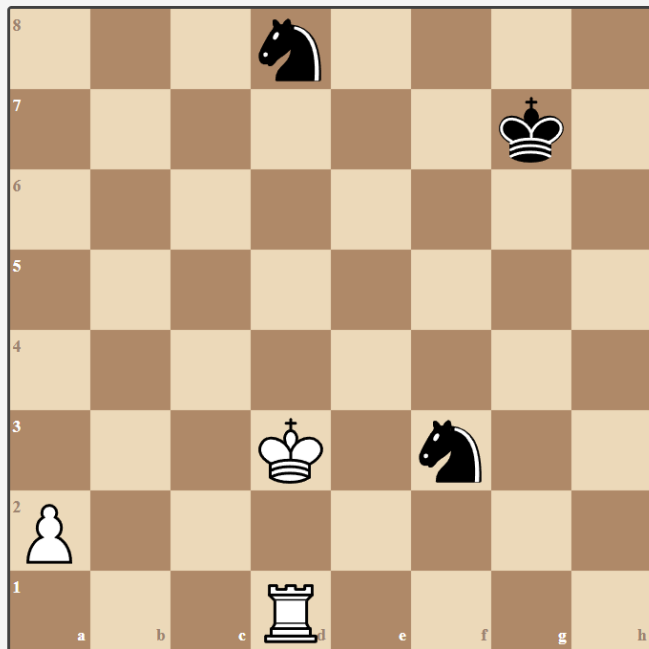
Below are a couple of double attack positions. Be ready to discuss these problems at our next lesson.

diagram 001



White to Move

diagram 002



White to Move